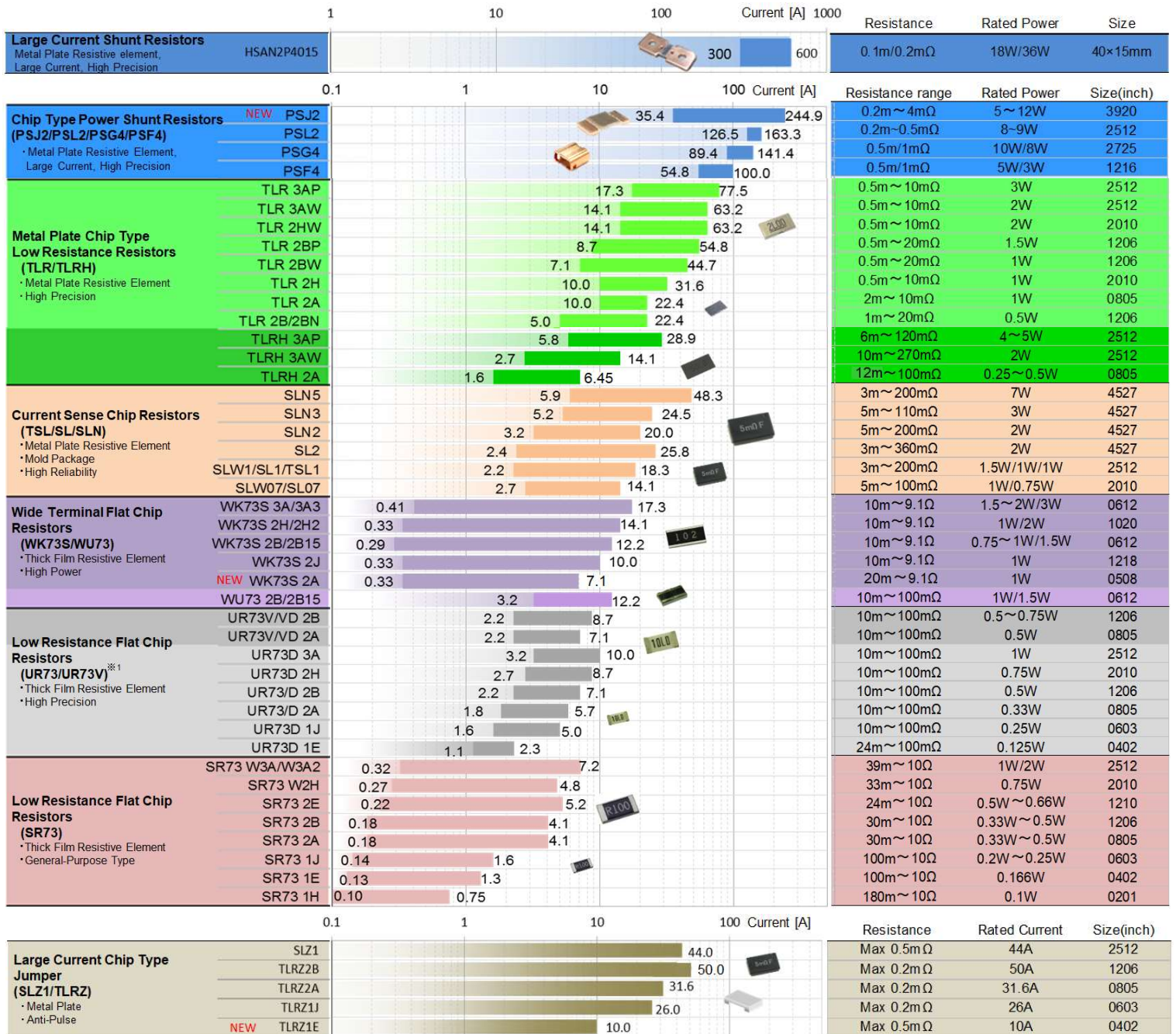


Current Sense Product Selection Guide



- This selection guide plots the current value calculated from $\sqrt{\text{Power rating} / \text{upper or lower limit of resistance}}$. Please build the design considering heat dissipation.
- This is the guideline to select products by current value. Please confirm product specification for actual design and selecting products and use the products based on the precautions to use.
- Please confirm our catalog or delivery specification for the details of each product.
- ※1 UR73/UR73D (without V) is only applied for car accessories as automotive use. Please ask us for details.

Features

- Sensing from large current to small current by ultra-low resistance
- Wide product lineup is available
- AEC-Q200 qualified
(Some of the above series are partially excluded. Please contact KOA.)

Application Examples

- Power supplies
- Current management sensor including charge/discharge of secondary batteries
- Current control sensor of motors and DC/DC converters
- Circuit protecting sensor by overcurrent detection

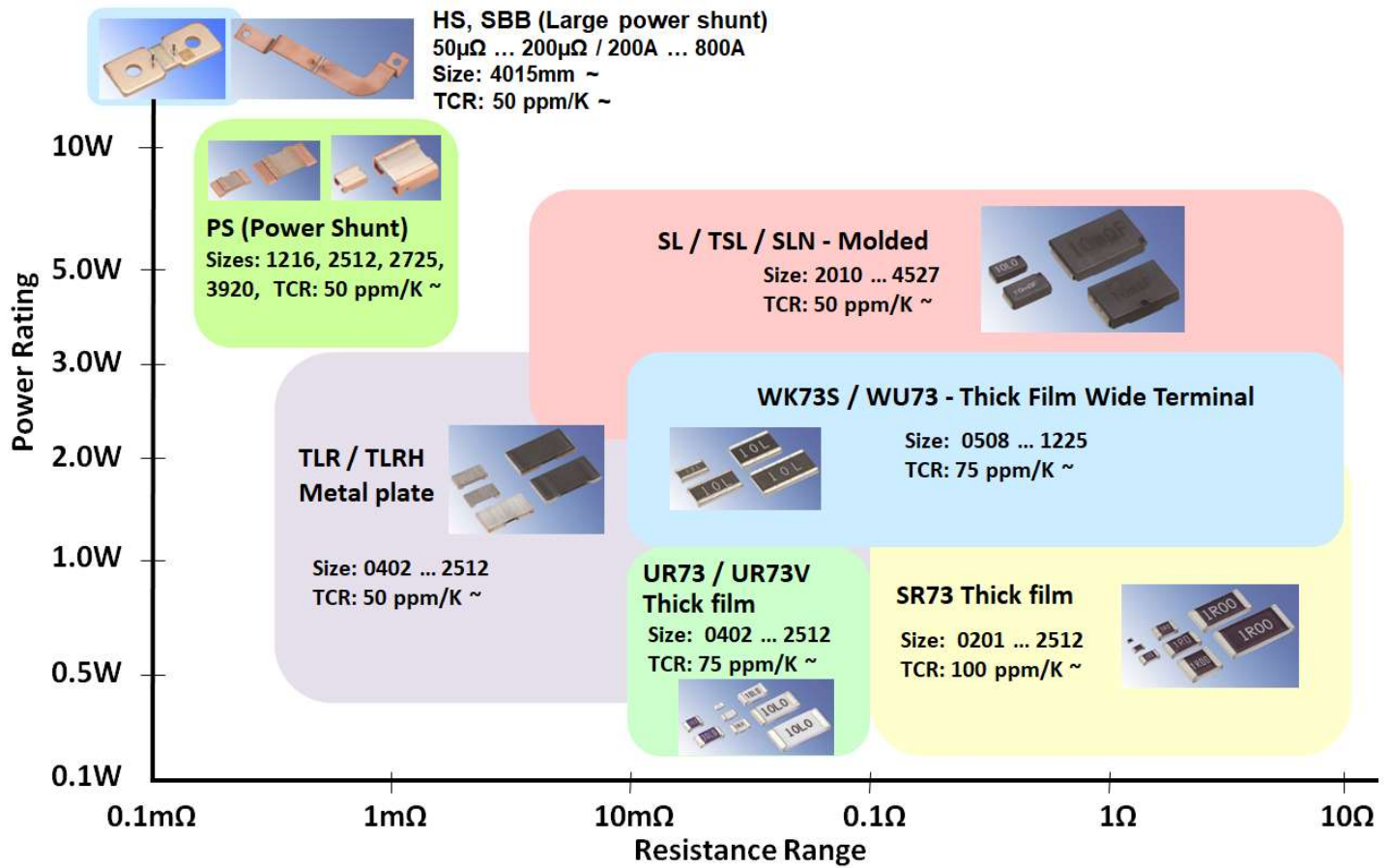
For more information, please contact:

KOA Europe GmbH, Kaddenbusch 6, D-25578 Dägeling-Itzehoe, Germany

Phone: +49 (0)4821 89890, E-Mail: info@koaeurope.de, Internet: www.koaeurope.de

Our privacy policy in its newest form is available at <https://koaeurope.de/privacy-policy/>

Current Sense Product Selection Guide



Ratings

	HS SBB	PSL2 PSJ2	PSF4 PSG4	TLR TLRH	SL, TSL SLN	UR73 UR73V	WK73S WU73	SR73
Power Rating	8 W ~ 36 W	5 W ~ 12 W	3 W ~ 10 W	0.2 W ~ 5 W	0.75 W ~ 7 W	0.125 W ~ 1 W	0.75 W ~ 3 W	0.1 W ~ 2 W
Resistance Range	50 $\mu\Omega$ ~ 0.2 m Ω	0.2 m Ω ~ 4 m Ω	0.5 m Ω , 1 m Ω	0.5 m Ω ~ 270 m Ω	3 m Ω ~ 360 m Ω	10 m Ω ~ 100 m Ω	10 m Ω ~ 9.76 Ω	24 m Ω ~ 10 Ω
Resistance Tolerance	$\pm 5\%$	$\pm 1\%$	$\pm 1\%$	$\pm 1\%$, $\pm 5\%$	$\pm 0.5\%$ ~ $\pm 5\%$	$\pm 1\%$	$\pm 0.5\%$ ~ $\pm 5\%$	$\pm 0.5\%$ ~ $\pm 5\%$
T.C.R. (ppm/K)	± 50	± 75 ~ ± 200	± 50	± 50 ~ ± 200	± 50 ~ ± 200	± 75 ~ ± 500	± 75 ~ ± 800	± 100 ~ ± 1000
Available Sizes (inch)	40 x 15mm ~ 20 x 1300mm	2512, 3920	1216, 2725	0402 ~ 2512	2010 ~ 4527	0402 ~ 2512	0508 ~ 1225	0201 ~ 2512

For more information, please contact:

KOA Europe GmbH, Kaddenbusch 6, D-25578 Dägeling-Itzehoe, Germany

Phone: +49 (0)4821 89890, E-Mail: info@koaeurope.de, Internet: www.koaeurope.de

Our privacy policy in its newest form is available at <https://koaeurope.de/privacy-policy/>